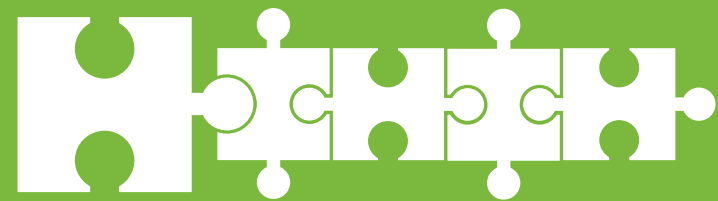




# TimberID

## complete EUDR compliance solution



FIRST MILE

## TimberID Platform - timber specific

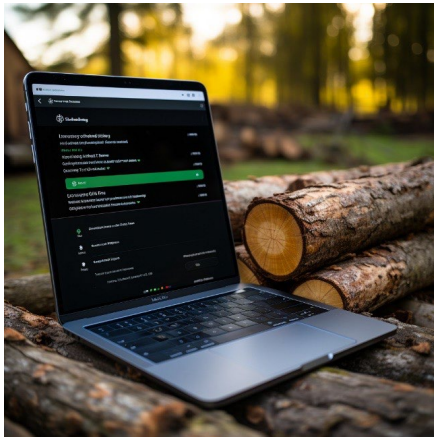


**The TimberID Platform** is a cutting-edge complete solution specifically engineered to streamline and enhance EUDR compliance management for timber supply chains.

Developed by renowned forest industry specialists and leading experts in traceability and datamanagement, this platform integrates deep forest industry knowledge with sophisticated technology to offer a comprehensive compliance toolkit.



# Geolocation evidence challenges



## “First Mile” importance

The TimberID Platform collects geolocation data from the start, right at the timber harvesting. This data is crucial for tracking each delivery and is used in the first submission of a DDS (due diligence system)

## EUDR TimberID compliance evidence

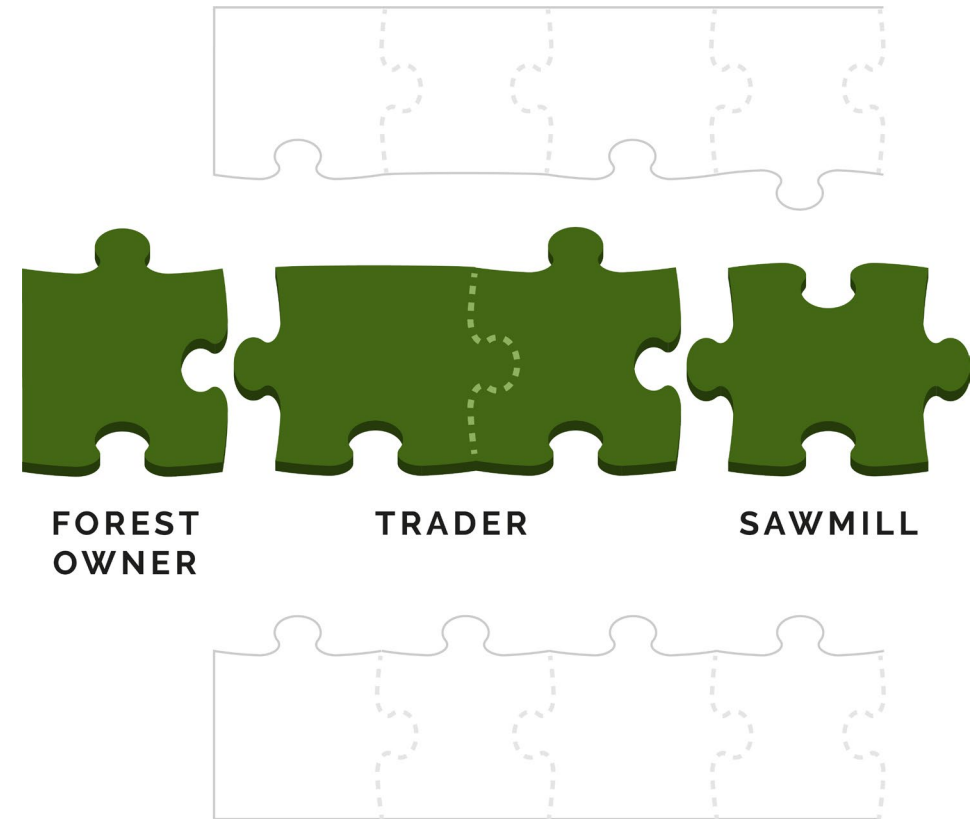
By collecting additional information in the due diligence process and linking it with the geolocation and/or the transaction we proof compliance and enable the segregation of non-compliant deliveries.



## „First Mile” methodology

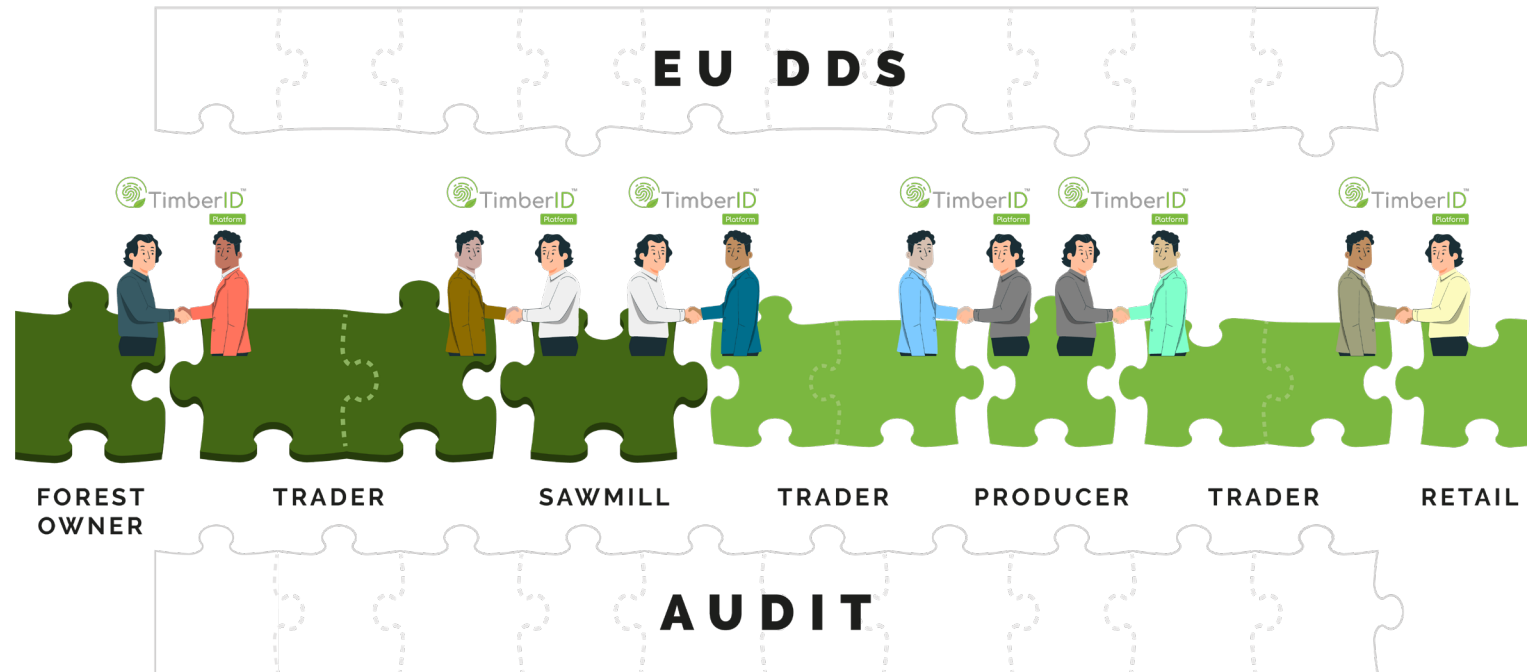
The sourcing of timber always starts in the forest. It is therefore essential to have a solid methodology for identifying timber harvesting geolocation data, verifying it, proofing compliance and linking it to the relevant transactions. This is the only way to submit correct Due Diligence Statements. Having in mind the strict responsibility and liability associated for their supply chains all stakeholders in a chain have a vital interest in a highly reliable and verifiable information flow, linked to the traded commodities or wood products.

A first step is to collect all relevant information from the specified forest plots. This information needs to be amended with documented country-specific risk mitigation measures.





# Supply chain under EUDR



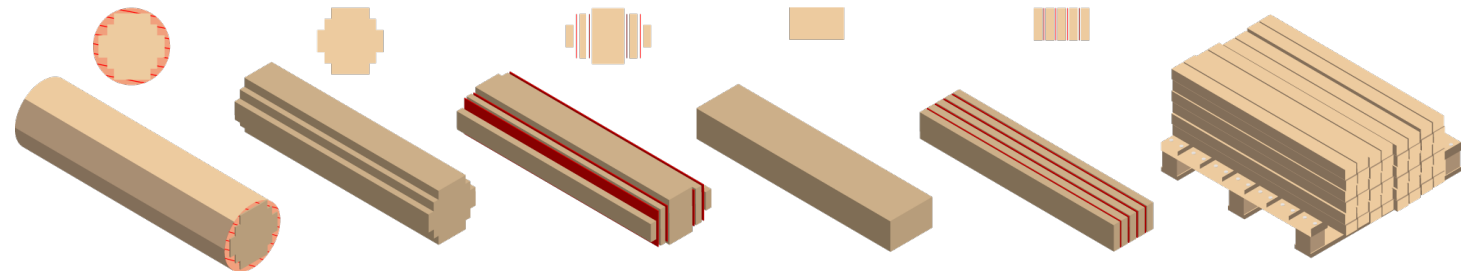
Collecting data at the "**First Mile**" is crucial for maintaining transparency in the supply chain and verifying the geolocation of timber sources. This information about the origin can be transferred to the sawmill and linked to specific batches of goods, packages or even to individual boards. Once this geolocation data is linked, the information flow is complete, ensuring a documented chain of custody. Stakeholders can then use this data to trace the final wood product. This system enables easier handling of downstream audits and automation of reporting processes.

## Geolocation at a board level



### Digital delivery note

A digital delivery note is issued in the forest with data sourced at the forest. Upon reception, this delivery note is verified at the sawmill gate.



### Provenance data passed to a board

During the production, geolocation data is assigned to each production batch, package, or even individual board, ensuring traceability. This system is robust and capable of handling complex scenarios even where a single delivery may involve multiple origins.



# TimberID authentication module

## Digital Delivery Note evidence datasets

### Images

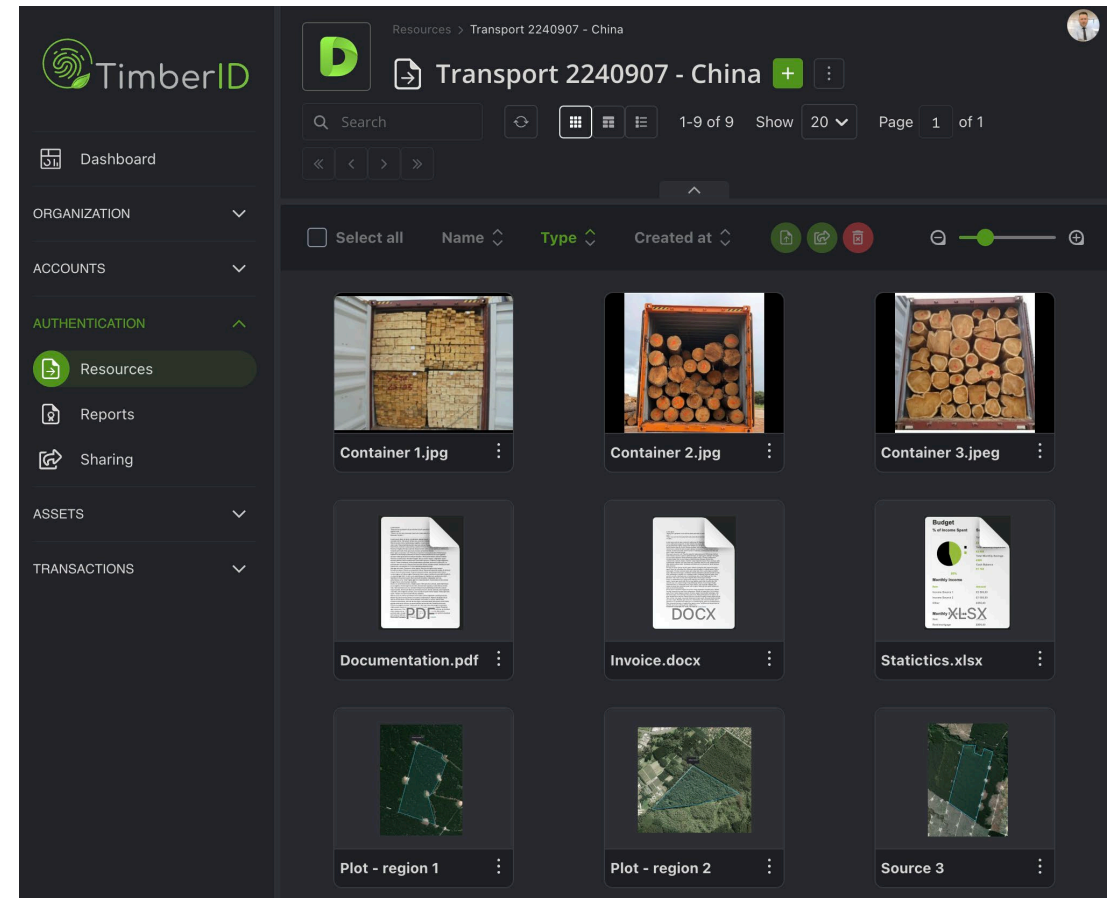
- ✓ visual evidence
- ✓ comparison source
- ✓ package proof

### Documents

- ✓ deforestation reports
- ✓ permissions
- ✓ invoices
- ✓ licenses
- ✓ references

### Plot maps

- ✓ geolocation data
- ✓ reports





# Due diligence flow



The transaction specification of the DDN process is supported by the acquisition of a data set in the form of an image of the entire load at shipment, the Dcode being applied at least once on one element in the load, truck, container, etc., and assigned for verification and acceptance of the delivery at receipt.

The DDN is the primary method of authenticating the provenance of the shipment. ('First Mile')



# Satellite Imagery Deforestation Analysis

## TimberID Deforestation Report structure:

- Report summary
- Satellite images sourcing - Copernicus Sentinel
- Map on 'forest maintained', 'lost forest', 'gained forest' from 2020 to date on a full year
- Basic data about the plot, as surface area, coordinates, biomass
- Forest cover map for the year 2020 provided by the EC JRC
- Tropical Tree Cover, 2020
- Satellite image + Forest mask - annual forest loss view
- 2020-2024 - Satellite image + Forest mask
- Risk of future deforestation based on historical data
- Verification of commodity plots
- Map of proximity to population centres risk
- Map of flood risk, Map of fires risk, Map of farmland proximity risk



# DDS creation

EU PLATFORM „TRACES“



## DDS

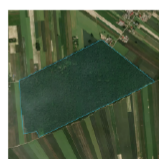
Due Diligence Statement

NR #123891769923

Forest data set



**Surface area:**  
0.974754 km<sup>2</sup>  
**Coordinates:**  
[(22.621710, 51.094348),(22.627745, 51.098633),(22.629899, 51.097757), (22.631385, 51.096672),(22.633477, 51.094710),(22.636631, 51.093015), (22.633235, 51.084119),(22.627412, 51.085833),(22.621710, 51.094348)],



**Surface area:**  
0.576637 km<sup>2</sup>  
**Coordinates:**  
[(22.316804, 51.218944),(22.327545, 51.222263),(22.334455, 51.218867), (22.319392, 51.214335),(22.319087, 51.214807),(22.317313, 51.214590), (22.316804, 51.218944)],

Product dataset

**Common name of wood species:**  
Pine Scots *Pinus sylvestris*  
**Quantity:**  
100m<sup>3</sup>

**Common name of wood species:**  
Pine Scots *Pinus sylvestris*  
**Quantity:**  
75m<sup>3</sup>

Company dataset



**Buyers  
Business Data**

**Name:** Lili&Su  
**Address:** Mieszka I 22, 75-448 Koszalin  
**Country:** 530 764 040  
**Phone:** Poland  
**Email:** lili&su@su.pl

Upon risk assessment, the forest plot documentation may require a set of documents, such as land ownership, related licenses incl. harvesting, country forest management plan, timber certification (e.g. PEFC, FSC etc.), satellite imagery report with check on deforestation, degradation; third parties' rights; labour rights; human rights protected under international law; the principle of free, prior and informed consent (FPIC), including as set out in the UN Declaration on the Rights of Indigenous Peoples; and tax, anti-corruption index check, trade compliance evidence, second- and third-party audit reports.



# Dataset required for DDS creation on „Traces”

**Add transaction product**

Product\*

Plot\*

Supplier\*

**Traceability**  
Traceability Data

**Associated DDS Reference Numbers**  
no numbers

**Products**

Search  1-6 of 6 Show 20 Page 1 of 1

Trade name	Common name	Scientific name	Components	Harmonized Code
<input type="radio"/> Product 45	Logs	Pine Scots Pinus Sylvestris	-	CODE
<input type="radio"/> Product 2	Logs	Oak Mongolian Quercus Mongolica	-	CODE
<input checked="" type="radio"/> Product 1	Logs	Pine Scots Pinus Sylvestris	-	CODE
<input type="radio"/> Product 67	Logs	Acacia Blackwood Acacia Molaromyon	-	CODE
<input type="radio"/> Product 17	Logs	Chestnut Japanese Castanea Orientalis	-	CODE
<input type="radio"/> Product 21	Logs	Pine Scots Pinus Sylvestris	-	CODE

**DDS Reference Number**

**Transaction DDS Number**

Number\*

Type

**Plots**

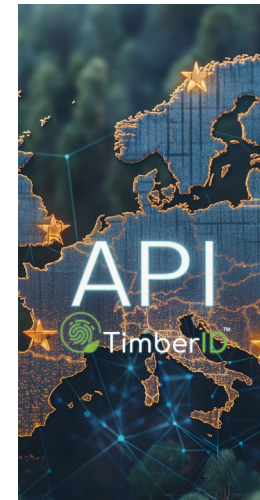
Search  1-2 of 2 Show 20 Page 1 of 1

Name	Description	Country	Region	Surface area	Time range	Type of use
<input checked="" type="radio"/> Plot 1	-	Poland - PL	Lubelskie	78 ha	01/01/2024 - 25/01/2024	Owner
<input type="radio"/> Plot 2	-	Poland - PL	Lubelskie	12 ha	07/01/2024 - 14/01/2024	Owner

**Suppliers**

Search  1-2 of 2 Show 20 Page 1 of 1

Name	Country	Region	City
<input checked="" type="radio"/> Company ABC	Poland - PL	Lubelskie	Lublin
<input type="radio"/> Company XYZ	Poland - PL	mazowieckie	Warszawa



## Process automation

- ✔ Robust due diligence datasets
- ✔ API integration with “Traces”

## Traceability with a geolocation proof

Traceability by applying a geolocation timber log ID secures the accurate data sourcing and further supply chain tracing.

The log ID is a solid verification tool to confirm the provenance of the log/batch

**Dcode** - variable code mark sourced by positioning satellite signals accessible globally.

- 🌿 Geolocation accuracy of 2m
- 🌿 Timestamp accuracy of one second



**TAMPER-PROOF,  
UNFAKEABLE DATA**  
Encrypting satellite data and  
delivering - 100% authentication



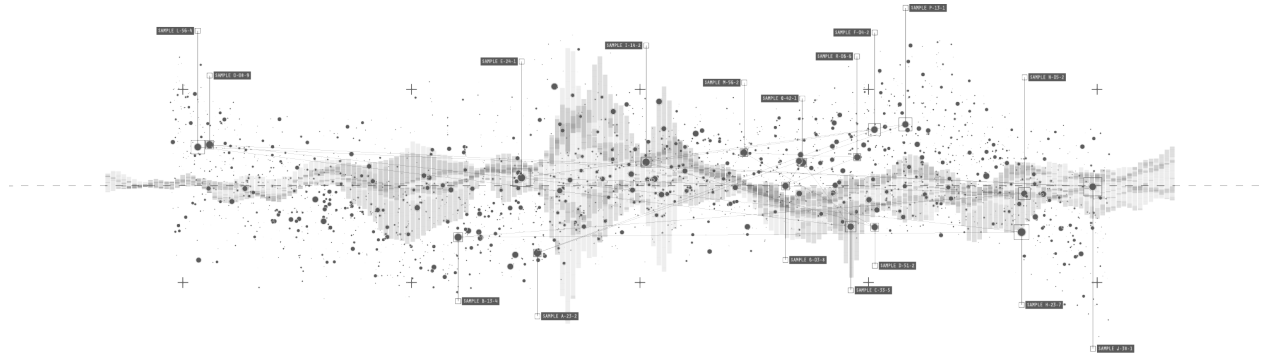
**ECO-FRIENDLY,  
PROCESS STABILITY**  
Elimination of any  
consumables.



**EU DEFORESTATION  
REGULATION COMPLIANT**  
Provenance traceability  
to the source.



# „First Mile” supply chain impact



- ✔ **“First Mile”** data gathering at the source
- ✔ Timber log provenance authentication
- ✔ Digital Delivery Note - transaction evidence
- ✔ Automated DDS creation and datasets storage



# EUDR challenges are addressed

## Highlights

- ✔ Secure, Auto-Scalable, Redundant and Reliable system architecture (AWS cloud)
- ✔ Data privacy and security, selective sharing
- ✔ Collection of data, documents and information
- ✔ Documented risk assessment and mitigation measures for country/supplier/shipment
- ✔ Tailored risk assessments for various countries
- ✔ Unique approach to workload distribution
- ✔ Upstream document transfer and tracking
- ✔ Audit trail functionality and report generation
- ✔ Supply traceability authentication, digital delivery confirmation process
- ✔ Generation of a deforestation report for a forest plot based on satellite images, fully automated
- ✔ Efficient availability of integration via API keys, including with the EU Traces system
- ✔ Geolocation of timber through the use of encrypted log marking, Dcode
- ✔ Acquisition, transmission and verification of Dcode data
- ✔ Segregation of delivery indicating non-compliance



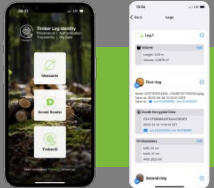
# TimberID Platform is affordable by All



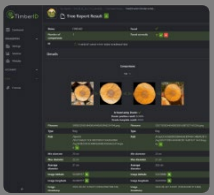
**Dcode**  
Apply and read




Applying a Dcode on a timber log with a selected marker, using the Dcode Reader app for encrypted data read and export.



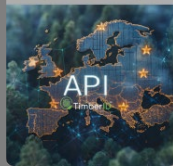
**TimberID**  
Authentication Platform



Applying a Dcode on a timber log with a selected marker, using the TimberID app for data sourcing, cloud data processing and storing, providing the authentication of provenance proof.



**TimberID**  
EUDR Platform



Seamless automated data creation and storage based on defined processes meeting the regulatory objectives, creating a DDS, submitting to EU Trace portal.

## TimberID platform

- ✔ Annual license access fee - **price rage** - €100\* - €3,7K\* - and more\*.
- ✔ Operational fees (Pay-As-You-Use) - file storage, processing and transfers
- ✔ Mobile App fees – App Store, Google Play
- ✔ Implementation – within 1 day

**Hardware** – unit price, purchase.

*\* Range by Client revenues, Deeplai T&C*

# EUDR first mile stakeholders' benefits

## TimberID solution benefits

- ✔ Secure, auto scalable, reliable system architecture
- ✔ Data privacy and security, selective sharing
- ✔ Collection of data, documents and information
- ✔ Upstream document transfer tracking
- ✔ Downstream audit automation
- ✔ Delivery traceability authentication
- ✔ Digital delivery note process
- ✔ Robust API connectivity keys, incl. EU Traces System
- ✔ Timber geolocation by applying encrypted code log marking, Dcode
- ✔ Dcode data transfer, sourcing and verification



# Safe and effective EUDR execution



**FIRST MILE**

Find out more on



[deeplai.com](https://deeplai.com)



[www.linkedin.com/company/deeplai/](https://www.linkedin.com/company/deeplai/)